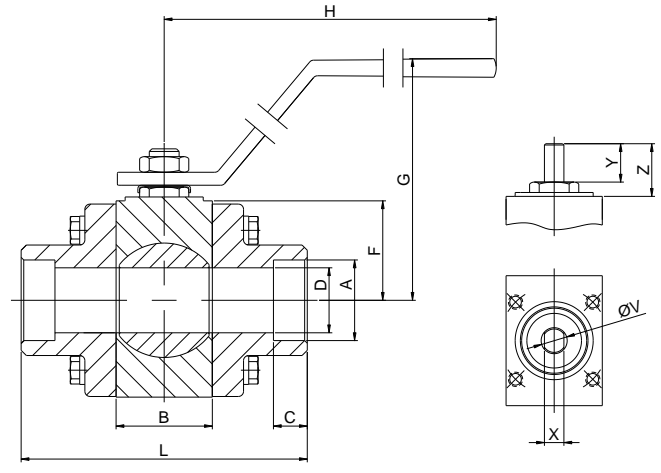
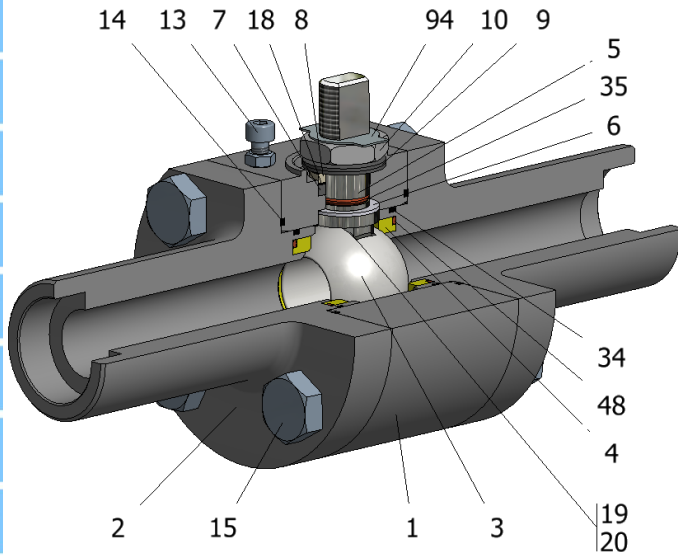


FIG.K 159 NGGVV CL1500 1/4"-2" SW



| Position | Description | Material |
|----------|-----------------|---------------------|
| 01 | Body 1 | C.S. A350 LF2/A-105 |
| 02 | Body 2 | C.S. A350 LF2/A-105 |
| 03 | Ball | A182 F316/316L |
| 04 | Seat | DEVLON V |
| 05 | Stem | S.S. AISI 316/316L |
| 06 | Stem seal | PEEK |
| 07 | Stem packing 1 | Graphite |
| 08 | Gland packing | S.S. AISI 316 |
| 09 | Spring washer | S.S. AISI 301 |
| 10 | Stem nut | S.S. AISI 304 |
| 13 | Cover bolt | S.S. (316) |
| 14 | Body seal 1 | Graphite |
| 15 | Body bolt | A320 L7M |
| 16 | Handle | WCB |
| 17 | Handle bolt | 1.045(8.8) |
| 18 | Thrust washer | PTFE (modified)+CG |
| 19 | Spring | S.S. AISI 316 |
| 20 | Antistatic ball | S.S. AISI 316 |
| 34 | Body seal 2 | FKM |
| 35 | O ring stem | FKM |
| 48 | O ring spring | FKM |
| 94 | Stop washer | S.S. AISI 304 |

General features

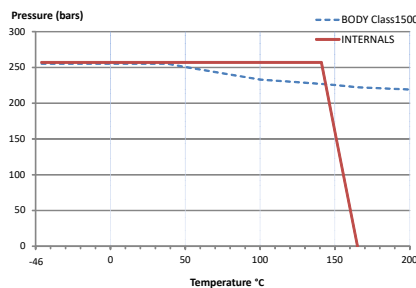
- Floating ball.
- Three pieces.
- Full bore.
- Soft seat.
- Bidirectional.
- Anti Blow out proof stem.
- Autoadjustable packing.
- Anti static device.
- Self-cavity pressure relief.

Standards

- Top flange ISO 5211
- Socket-welding ends B16.11
- Materials according to NACE MR0175
- Design B16.34
- Testing API 598, BS 6755-1

Official approvals

- CERTIFICATE FIRE SAFE
- ATEX 2014/34/EU
- PED 2014/68/EU
- SIL 3 CAPABLE



PEKOS GROUP CERTIFICATES:

ISO 9001: 2015 / 2014/68/EU /API-6D



DIMENSIONS & Technical information

| DN | CL | D | L | E | A | B | C | F | H | G | V | X | Y | Z | n x d | ISO 5211 | Torque | MAST | Weight |
|--------|------|------|-----|---|------|----|------|----|-----|-----|----|-----|----|----|-------|----------|--------|------|--------|
| 1/4" | 1500 | 11,1 | 216 | - | 14,5 | 34 | 9,5 | 31 | 180 | 98 | 12 | 7,5 | 10 | 14 | - x - | F03 | 14 | 34 | 4 |
| 1/2" | 1500 | 11,1 | 216 | - | 22 | 34 | 9,5 | 31 | 180 | 98 | 12 | 7,5 | 10 | 14 | - x - | F03 | 14 | 34 | 4 |
| 3/4" | 1500 | 15,5 | 229 | - | 27,5 | 37 | 12,5 | 41 | 180 | 108 | 12 | 7,5 | 11 | 12 | - x - | F04 | 26 | 34 | 6 |
| 1" | 1500 | 21 | 254 | - | 34 | 44 | 12,5 | 46 | 220 | 109 | 15 | 9 | 17 | 21 | - x - | F05 | 37 | 65 | 8 |
| 1 1/4" | 1500 | 34 | 280 | - | 43 | 60 | 12,5 | 63 | 250 | 139 | 22 | 16 | 26 | 33 | - x - | F07 | 120 | 234 | 16 |
| 1 1/2" | 1500 | 34 | 305 | - | 49 | 60 | 12,5 | 63 | 250 | 139 | 22 | 16 | 26 | 33 | - x - | F07 | 120 | 234 | 17 |
| 2" | 1500 | 43 | 368 | - | 61,5 | 70 | 16 | 64 | 250 | 140 | 22 | 16 | 20 | 30 | - x - | F07 | 145 | 234 | 24 |

** Depending on service conditions.

* Dimensions are in mm.

* Torque & MAST are in Nm

* Weight is in Kilograms

* Torque values have been measured ΔP at maximum rating at room temperature