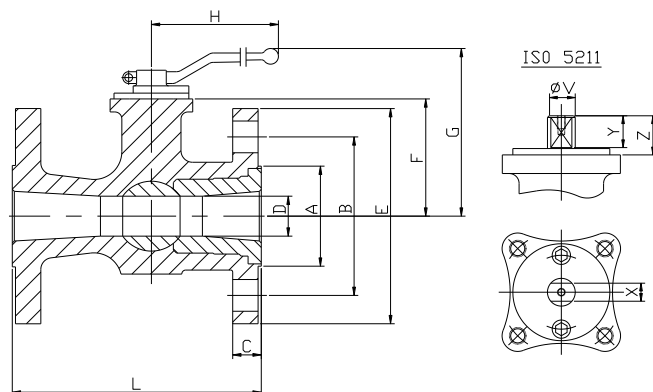
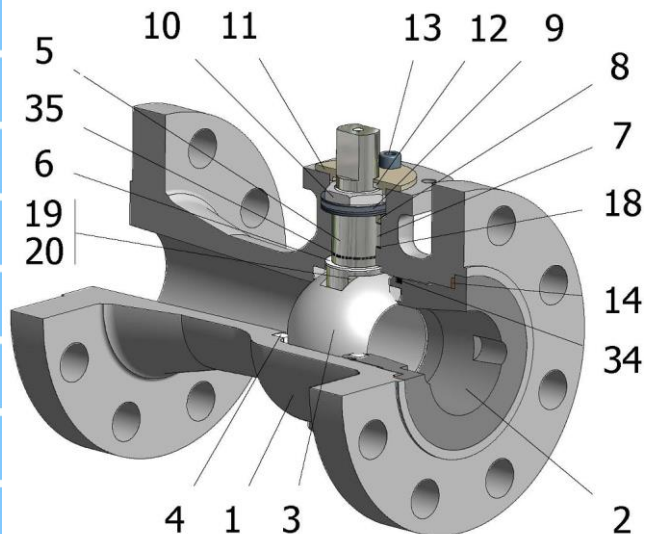


FIG.RB 34 SGGVV CL300 3/4"-6"



Position	Description	Material
01	Body 1	C.S. A216 WCC
02	Body 2	C.S. A-105
03	Ball	S.S. A351 CF8M
04	Seat	PTFE+CG
05	Stem	S.S. AISI 316
06	Stem seal	PTFE+CG
07	Stem packing	Graphite
08	Gland packing	S.S. AISI 316
09	Spring washer	S.S. AISI 301
10	Stem nut	S.S. AISI 303
11	Cover	S.S. A351 CF8M
12	Cover ring	PTFE
13	Cover bolt	S.S. (316)
14	Body seal 1	Graphite
16	Handle	A351 CF8M/WCB
17	Handle bolt	S.S. (304)/1.045(8.8)
18	Thrust washer	PTFE+CG
19	Spring	S.S. AISI 316
20	Antistatic ball	S.S. AISI 316
34	Body seal 2	FKM
35	O ring stem	FKM

General features

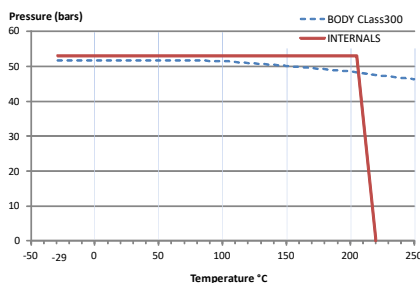
- Floating ball.
- End entry.
- Reduced bore.
- Soft seat.
- Bidirectional.
- Self-cavity pressure relief.
- Anti Blow out proof stem.
- Autoadjustable packing.
- Anti static device.
- Self-cavity pressure relief.

Standards

- Top flange ISO 5211
- Flanges ANSI B16.5
- Face to face ANSI B16.10
- Design AP 6D, B16.34
- Testing API 598, API 6D, BS 6755-1
- Materials according to NACE MR0175

Official approvals

- CERTIFICATE FIRE SAFE
- TA-LUFT VDI 2440
- ISO 15848-1
- API 6D.
- ATEX 2014/34/EU
- PED 2014/68/EU
- SIL 3 CAPABLE



PEKOS GROUP CERTIFICATES:
ISO 9001: 2015 / 2014/68/EU /API-6D



DIMENSIONS & Technical information

DN	CL	D	L	E	A	B	C	F	H	G	V	X	Y	Z	n x d	ISO 5211	Torque	MAST	Weight
3/4"	300	15	152	118	43	82,5	16	46	185	94	12	8	12	15	4 x 19	F05	17	36	4
1"	300	20	165	124	51	89	18	54	185	102	12	8	13	16	4 x 19	F05	19	36	5
1 1/2"	300	32	190	156	73	114	22	65	185	115	16	10	19	22	4 x 22	F05	38	78	8
2"	300	40	216	165	92	127	23	75	293	129	20	14	22	25	8 x 19	F07	50	171	12
3"	300	65	283	210	127	168	29	96	293	150	20	14	22	25	8 x 22	F07	108	171	22
4"	300	80	305	254	157	200	32	114	350	187	25	19	24	27	8 x 22	F10	180	354	38
6"	300	111	403	318	216	270	37	148	680	237	34	26	35	38	12 x 22	F12	504	895	72

** Depending on service conditions. * Dimensions are in mm. * Torque & MAST are in Nm * Weight is in Kilograms
* Torque values have been measured ΔP at maximum rating at room temperature