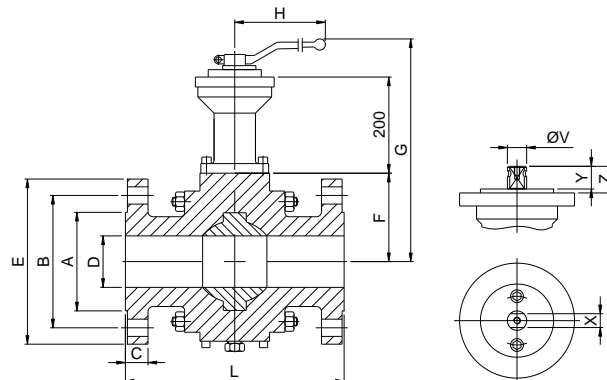
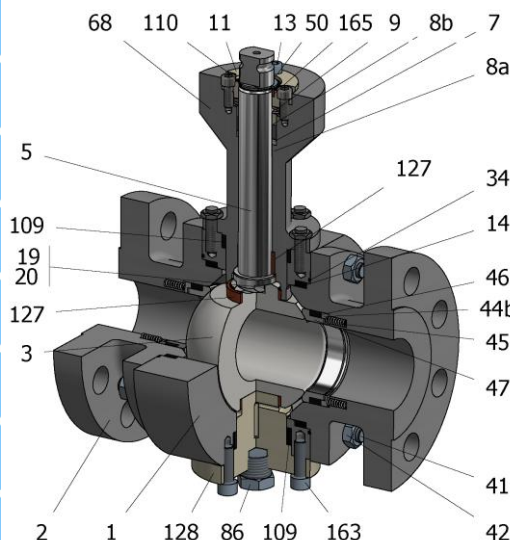


FIG.ZFGKMS 254 CGGG CL2500 2"



Position	Description	Material
01	Body 1	C.S. A-105
02	Body 2	C.S. A-105
03	Ball	XM-19+Cr-Carbide
05	Stem	XM-19
07	Stem packing	Graphite
08a	Gland packing 1	S.S. AISI 316
08b	Gland packing 2	S.S. AISI 316
09	Spring washer	Inconel X718
11	Cover	S.S. AISI 316
13	Cover bolt	S.S. (316)
14	Body seal 1	Graphite
16	Handle	WCB
17	Handle bolt	1.045(8.8)
19	Spring	S.S. AISI 316
20	Antistatic ball	S.S. AISI 316
22	Stop pin	S.S. AISI 316
34	Body seal 2	Graphite
41	Stud	A320 L7M
42	Nut	A194 7M
44b	Ring seat 2	XM-19
45	Spring seat	Inconel X750
46	Seat seal	Graphite
47	Metal seat	XM-19+Cr-Carbide
50	Subjection ring	S.S. AISI 304
86	Drain plug	C.S. A350 LF2
86a	Vent plug	C.S. A350 LF2
109	Cover seal	Graphite
110	Subjection ring seal	S.S. AISI 316 Nitrided
127	Stem bearing	Carbongraphite
128	Body cover 2	C.S. A-105
163	Body cover 2 bolt	S.S. (316)
165	Stem bearing	Carbongraphite

General features

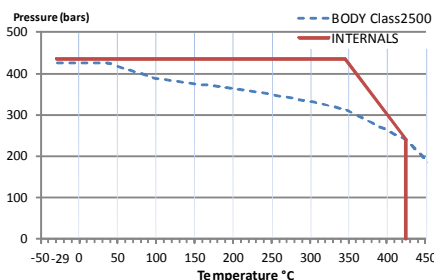
Full trunnion.
 Three pieces.
 Full bore.
 Metal to Metal.
 Bidirectional.
 Spring loaded seat system.
 Anti Blow out proof stem.
 Anti static device.
 Self-cavity pressure relief.
 Double Block and Bleed.
 Security stem extension
 TA-LUFT.

Standards

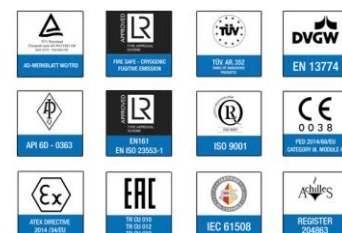
Top flange ISO 5211
 Flanges ANSI B16.5
 Face to face ANSI B16.10
 Design AP 6D, B16.34
 Testing API 598, API 6D, BS 6755-1
 Materials according to NACE MR0175

Official approvals

CERTIFICATE FIRE SAFE
 API 6D.
 ATEX 2014/34/EU
 PED 2014/68/EU
 SIL 3 CAPABLE



PEKOS GROUP CERTIFICATES:
 ISO 9001: 2015 / 2014/68/EU / API-6D



DIMENSIONS & Technical information

DN	CL	D	L	E	A	B	C	F	H	G	V	X	Y	Z	n x d	ISO 5211	Torque	MAST	Weight
2"	2500	42	451	235	92	171	57	290	200	407	36	27	35	50	8 x 29	F12	860	1990	100

** Depending on service conditions.

* Dimensions are in mm.

* Torque & MAST are in Nm

* Weight is in Kilograms

* Torque values have been measured ΔP at maximum rating at room temperature