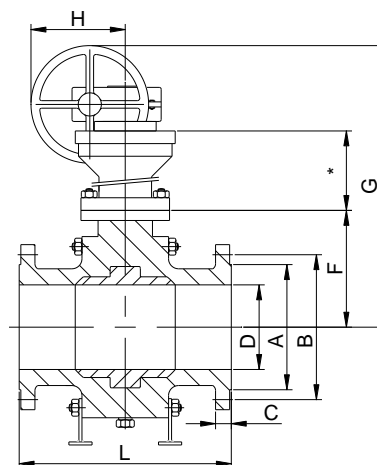
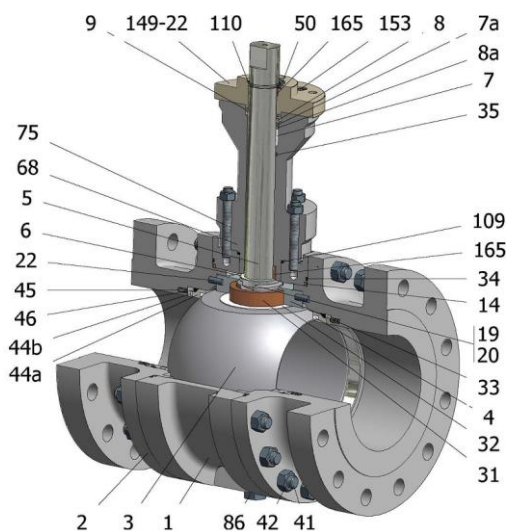
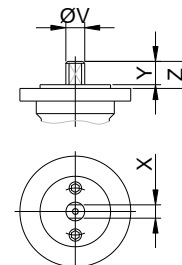


FIG.ZFGKOS 26 KTTGN PN100 DN100-350 F2



***EXTENSION**

- F10-250
- F12
- F14 300
- F16
- F25-400



Position	Description	Material
01	Body 1	S.S. 1.4401
02	Body 2	S.S. 1.4401
03	Ball	S.S. 1.4408
04	Seat	PCTFE
05	Stem	XM-19
06	Stem seal	PCTFE
07	Stem packing	PTFE (modified)
07a	Stem packing 2	Graphite
08a	Gland packing 1	S.S. 1.4401
08b	Gland packing 2	S.S. 1.4401
09	Spring washer	S.S. 1.4310
14	Body seal 1	PTFE (modified)
19	Spring	S.S. 1.4401
20	Antistatic ball	S.S. 1.4401
22	Stop pin	S.S. 1.4401
31	Bearing	MU-316
32	Bearing disk	PTFE (modified)+FG
33	Support bearing	S.S. 1.4401
34	Body seal 2	Graphite
35	O ring stem	NBR
41	Stud	A4-70
42	Nut	A4-70
44a	Ring seat 1	S.S. 1.4401
44b	Ring seat 2	S.S. 1.4401
45	Spring seat	Inconel X750
46	Seat seal	Graphite
50	Subjection ring	S.S. 1.4301
68	Stem extension casing	S.S. 1.4401
75	Extension bolt	A4-70
86	Drain plug	S.S. 1.4401
86a	Vent plug	S.S. 1.4401
109	Cover seal	Graphite
110	Subjection ring seal	S.S. 1.4401 Nitrided
149	ISO cover	S.S. 1.4401
153	ISO cover bolt	A4-70
165	Stem bearing	PTFE (modified)+FG

General features

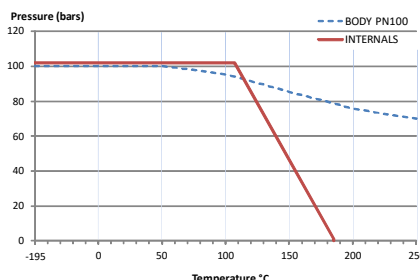
- Full trunnion.
- Three pieces.
- Full bore.
- Soft seat.
- Bidirectional.
- Self-cavity pressure relief.
- Spring loaded seat system.
- Anti Blow out proof stem.
- Anti static device.
- Autoadjustable packing.
- Double Block and Bleed.
- Cryogenic.
- Degreased

Standards

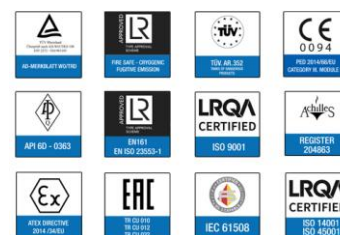
- Top flange ISO 5211
- Flanges EN 1092-01
- Face to face EN 558
- Design EN-12516, ISO 17292
- Testing EN-12266, ISO 5208

Official approvals

- CERTIFICATE FIRE SAFE
- TA-LUFT VDI 2440
- ISO 15848-1
- ATEX 2014/34/EU
- PED 2014/68/EU
- SIL 3 CAPABLE
- CRYOGENIC



PEKOS GROUP CERTIFICATES:
ISO 9001: 2015 / 2014/68/EU / API-6D



DIMENSIONS & Technical information

DN	PN	D	L	E	A	B	C	F	H	G	V	X	Y	Z	n x d	ISO 5211	Torque	MAST	Weight
100	100	100	430	265	162	210	36	155	271	936	36	27	35	50	8 x 30	F12	840	1990	105
150	100	150	550	355	218	290	44	229	336	1061	48	36	40	63	12 x 33	F14	1860	4716	218
200	100	201	650	430	285	360	52	295	355	1163	48	36	40	63	12 x 36	F16-1	2940	4716	385
250	100	252	775	505	345	430	60	330	430	1255	48	36	40	63	12 x 39	F16-1	3720	4716	645
300	100	303	900	585	410	500	68	400	430	1485	72	55	70	83	16 x 42	F25	4435	16131	692
350	100	334	1025	655	465	560	74	460	532	1599	72	55	70	83	16 x 48	F25	7550	16131	1156

** Depending on service conditions.

* Dimensions are in mm.

* Torque & MAST are in Nm.

* Weight is in Kilograms

* Torque values have been measured ΔP at maximum rating at room temperature