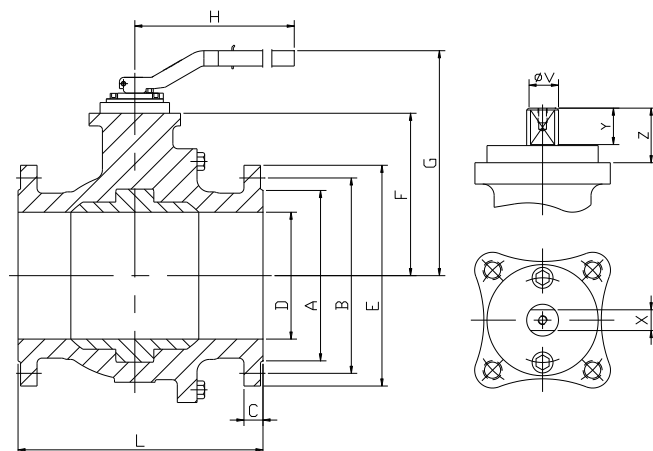
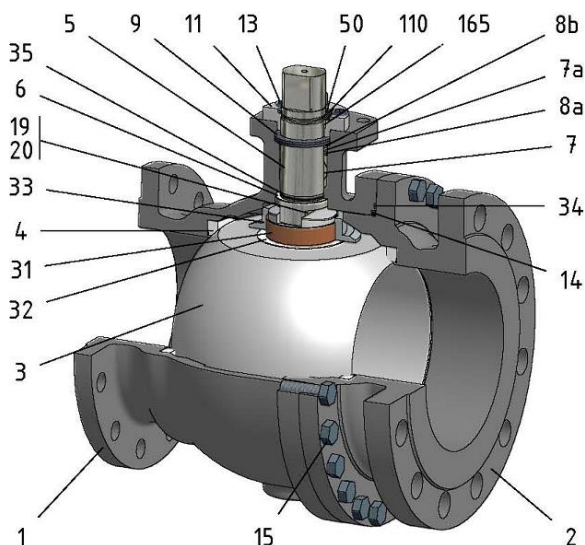


FIG.ZG 09 SSSGV PN40 DN150 F5



| Position | Description | Material |
|----------|----------------------|----------------------|
| 01 | Body 1 | C.S. 1.6220 |
| 02 | Body 2 | C.S. 1.6220 |
| 03 | Ball | S.S. 1.4408 |
| 04 | Seat | PTFE (modified)+CG |
| 05 | Stem | S.S. 1.4401 |
| 06 | Stem seal | PTFE (modified)+CG |
| 07 | Stem packing | PTFE (modified)+CG |
| 07a | Stem packing 2 | Graphite |
| 08a | Gland packing 1 | S.S. 1.4401 |
| 08b | Gland packing 2 | S.S. 1.4401 |
| 09 | Spring washer | S.S. 1.4310 |
| 11 | Cover | S.S. 1.4408 |
| 13 | Cover bolt | A4-70 |
| 14 | Body seal 1 | PTFE (modified)+CG |
| 15 | Body bolt | A2-70 |
| 16 | Handle | WCB |
| 17 | Handle bolt | 1.045(8.8) |
| 19 | Spring | S.S. 1.4401 |
| 20 | Antistatic ball | S.S. 1.4401 |
| 23 | Handle pin | S.S. 1.4021 |
| 24 | Lengthening handle | S.S. 1.0254 |
| 31 | Bearing | PTFE (modified) |
| 32 | Bearing disk | PTFE (modified)+FG |
| 33 | Support bearing | S.S. 1.4401 |
| 34 | Body seal 2 | Graphite |
| 35 | O ring stem | FKM |
| 50 | Subjection ring | S.S. 1.4301 |
| 110 | Subjection ring seal | S.S. 1.4401 Nitrided |
| 165 | Stem bearing | PTFE (modified)+FG |

General features

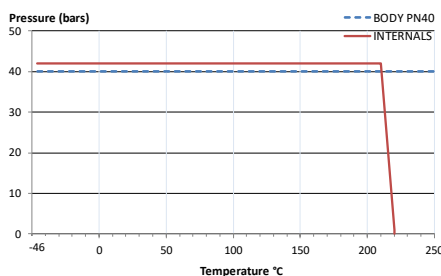
- Guided ball.
- Split body.
- Full bore.
- Soft seat.
- Bidirectional.
- Anti Blow out proof stem.
- Autoadjustable packing.
- Anti static device.
- Self-cavity pressure relief.

Standards

- Top flange ISO 5211
- Flanges EN 1092-01
- Face to face EN 558
- Testing EN-12266, ISO 5208
- Design EN-12516, ISO 17292

Official approvals

- CERTIFICATE FIRE SAFE
- TA-LUFT VDI 2440
- ISO 15848-1
- ATEX 2014/34/EU
- PED 2014/68/EU
- SIL 3 CAPABLE
- EN 161/EN ISO 23553-1



PEKOS GROUP CERTIFICATES:

ISO 9001: 2015 / 2014/68/EU /API-6D



DIMENSIONS & Technical information

| DN | PN | D | L | E | A | B | C | F | H | G | V | X | Y | Z | n x d | ISO 5211 | Torque | MAST | Weight |
|-----|----|-----|-----|-----|-----|-----|----|-----|-----|-----|----|----|----|----|--------|----------|--------|------|--------|
| 150 | 40 | 150 | 350 | 300 | 218 | 250 | 28 | 176 | 740 | 285 | 36 | 27 | 35 | 50 | 8 x 26 | F12 | 730 | 1073 | 83 |

** Depending on service conditions.

* Dimensions are in mm.

* Torque & MAST are in Nm.

* Weight is in Kilograms

* Torque values have been measured ΔP at maximum rating at room temperature