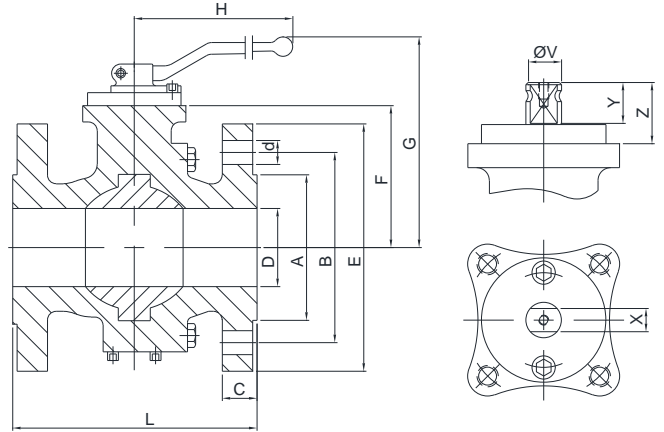
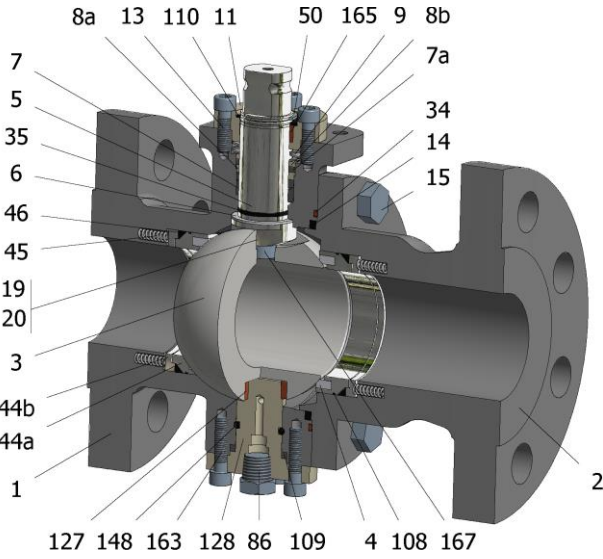


FIG.ZGS 16 SSSGV CL150 1 1/2"-4"



| Position | Description | Material |
|----------|----------------------|------------------------|
| 01 | Body 1 | S.S. AISI 316 |
| 02 | Body 2 | S.S. AISI 316 |
| 03 | Ball | S.S. A351 CF8M |
| 04 | Seat | PTFE (modified)+CG |
| 05 | Stem | A182 F51 |
| 06 | Stem seal | PTFE (modified)+CG |
| 07 | Stem packing | PTFE (modified)+CG |
| 07a | Stem packing 2 | Graphite |
| 08a | Gland packing 1 | S.S. AISI 316 |
| 08b | Gland packing 2 | S.S. AISI 316 |
| 09 | Spring washer | S.S. AISI 301 |
| 11 | Cover | S.S. AISI 316 |
| 13 | Cover bolt | S.S. (316) |
| 14 | Body seal 1 | PTFE (modified)+CG |
| 15 | Body bolt | A193 B8M |
| 16 | Handle | WCB |
| 17 | Handle bolt | 1.045(8.8) |
| 19 | Spring | Inconel X750 |
| 20 | Antistatic ball | Inconel 625 |
| 34 | Body seal 2 | Graphite |
| 35 | O ring stem | FKM |
| 44a | Ring seat 1 | S.S. AISI 316 |
| 44b | Ring seat 2 | S.S. AISI 316 |
| 45 | Spring seat | Inconel X750 |
| 46 | Seat seal | Graphite |
| 50 | Subjection ring | S.S. AISI 304 |
| 86 | Drain plug | S.S. AISI 316 |
| 108 | O ring seat | FKM |
| 109 | Cover seal | Graphite |
| 110 | Subjection ring seal | S.S. AISI 316 Nitrided |
| 127 | Stem bearing | MU-316 |
| 128 | Body cover 2 | S.S. AISI 316 |
| 148 | O ring cover | FKM |
| 163 | Body cover 2 bolt | S.S. (316) |
| 165 | Stem bearing | PTFE (modified)+FG |
| 167 | Stem guide bolt | S.S. (316) |

General features

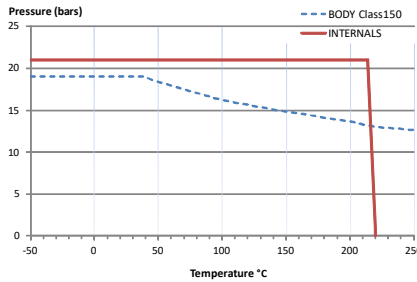
- Full trunnion.
- Split body.
- Full bore.
- Soft seat.
- Bidirectional.
- Spring loaded seat system.
- Anti Blow out proof stem.
- Autoadjustable packing.
- Anti static device.
- Self-cavity pressure relief.
- Double Block and Bleed.

Standards

- Top flange ISO 5211
- Flanges ANSI B16.5
- Face to face ANSI B16.10
- Testing API 598, API 6D, BS 6755-1
- Design API 6D, B16.34
- Materials according to NACE MR0175

Official approvals

- CERTIFICATE FIRE SAFE TA-LUFT VDI 2440
- ISO 15848-1
- API 6D.
- ATEX 2014/34/EU
- PED 2014/68/EU
- SIL 3 CAPABLE



PEKOS GROUP CERTIFICATES: ISO 9001: 2015 / 2014/68/EU /API-6D



DIMENSIONS & Technical information

| DN | CL | D | L | E | A | B | C | F | H | G | V | X | Y | Z | n x d | ISO 5211 | Torque | MAST | Weight |
|--------|-----|-----|-----|-----|-----|-----|----|-----|-----|-----|----|----|----|----|--------|----------|--------|------|--------|
| 1 1/2" | 150 | 40 | 165 | 125 | 73 | 98 | 16 | 75 | 293 | 145 | 22 | 17 | 20 | 30 | 4 x 16 | F07 | 50 | 550 | 9 |
| 2" | 150 | 50 | 178 | 150 | 92 | 121 | 17 | 83 | 293 | 153 | 22 | 17 | 20 | 30 | 4 x 19 | F07 | 60 | 550 | 12 |
| 2 1/2" | 150 | 65 | 190 | 180 | 105 | 140 | 19 | 96 | 293 | 166 | 22 | 17 | 20 | 30 | 4 x 19 | F07 | 110 | 550 | 17 |
| 3" | 150 | 75 | 203 | 190 | 127 | 152 | 21 | 116 | 450 | 199 | 28 | 22 | 22 | 40 | 4 x 19 | F10 | 150 | 1147 | 24 |
| 4" | 150 | 100 | 229 | 230 | 157 | 191 | 25 | 128 | 450 | 221 | 28 | 22 | 22 | 40 | 8 x 19 | F10 | 255 | 1147 | 36 |

** Depending on service conditions.

* Dimensions are in mm.

* Torque & MAST are in Nm

* Weight is in Kilograms

* Torque values have been measured ΔP at maximum rating at room temperature