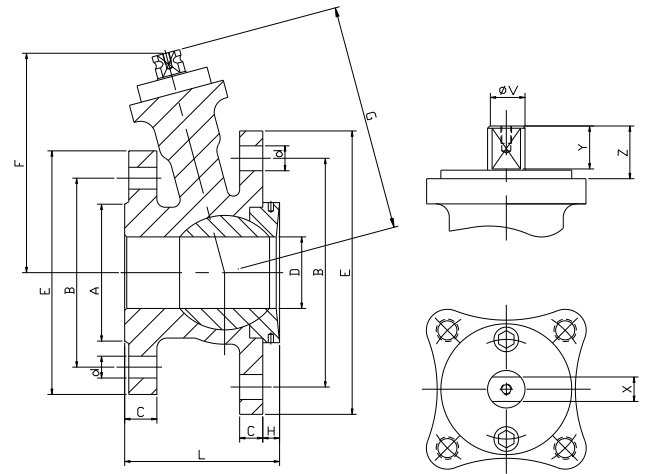
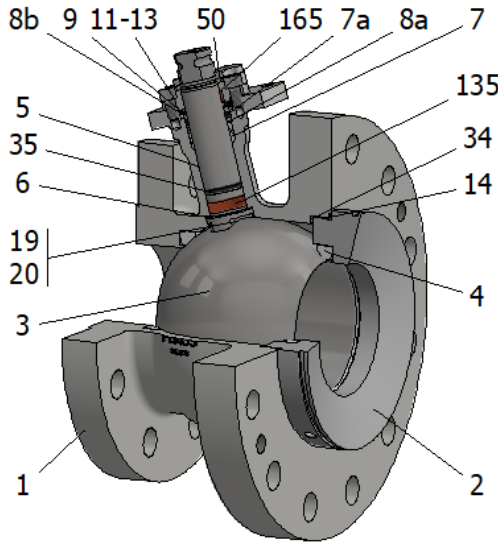


FIG.ZI 56 TTTGV CL150 1 1/2"-6"



Position	Description	Material
01	Body 1	S.S. A351 CF8M
02	Body 2	S.S. AISI 316
03	Ball	S.S. A351 CF8M
04	Seat	PTFE (modified)
05	Stem	S.S. AISI 316
06	Stem seal	PTFE (modified)+FG
07	Stem packing	PTFE (modified)
07a	Stem packing 2	Graphite
08a	Gland packing 1	S.S. AISI 316
08b	Gland packing 2	S.S. AISI 316
09	Spring washer	S.S. AISI 301
11	Cover	S.S. A351 CF8M
13	Cover bolt	A4-70
14	Body seal 1	PTFE (modified)
19	Spring	S.S. AISI 316
20	Antistatic ball	S.S. AISI 316
34	Body seal 2	Graphite
35	O ring stem	FKM
50	Subjection ring	S.S. AISI 420
135	Stem tip	PTFE (modified)+CG
137	O ring body 2	FKM
165	Stem bearing	PTFE (modified)+FG

General features

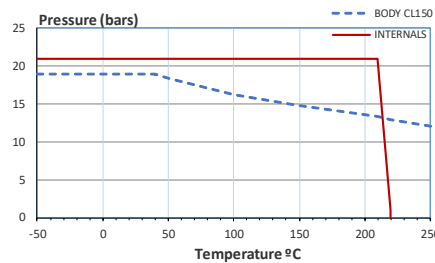
- Floating ball.
- End entry.
- Full bore.
- Soft seat.
- Bidirectional.
- Anti Blow out proof stem.
- Autoadjustable packing.
- Anti static device.
- Self-cavity pressure relief.

Standards

- Top flange ISO 5211
- Flanges ANSI B16.5
- Testing API 598, BS 6755-1
- Design B16.34

Official approvals

- TA-LUFT VDI 2440
- ISO 15848-1
- ATEX 2014/34/EU
- PED 2014/68/EU
- SIL 3 CAPABLE
- CERTIFICATE FIRE SAFE



PEKOS GROUP CERTIFICATES:
ISO 9001: 2015 / 2014/68/EU /API-6D



DIMENSIONS & Technical information

DN	CL	D	L	E	A	B	C	F	H	G	V	X	Y	Z	n x d	ISO 5211	Torque	MAST	Weight
1 1/2"	150	40	116	125/180	73	98/140	15/20	139.6	20	144.5	22	17	20	30	4/4 x 16/19	F07	32	244	9
2"	150	50	116	150/190	92	121/152	19/22	139.6	20	144.5	22	17	20	30	4/4 x 19/19	F07	42	244	12
3"	150	80	144	190/230	127	152/191	19.5/25	187.9	25	194.5	28	22	22	40	4/8 x 19/19	F10	103	510	16
4"	150	100	168.5	230/280	157.2	191/241	24.5/27	201.4	25	208.5	28	22	22	40	8/8 x 19/22	F10	145	510	26
6"	150	150	281	280/345	215.9	241/299	26/29	256.9	30	266	36	27	35	50	8/8 x 22/22	F12	400	1047	60

** Depending on service conditions.

* Dimensions are in mm.

* Torque & MAST are in Nm

* Weight is in Kilograms

* Torque values have been measured ΔP at maximum rating at room temperature