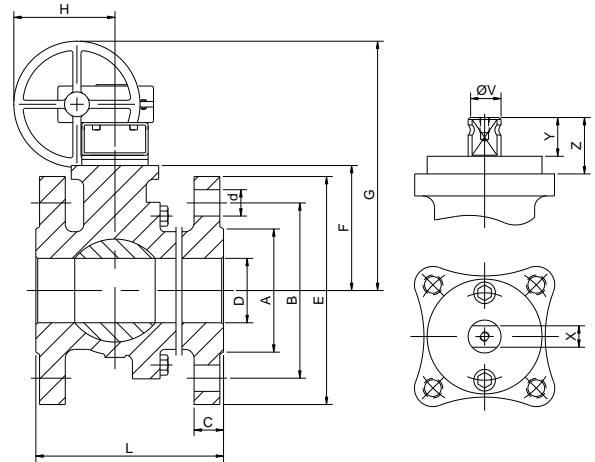
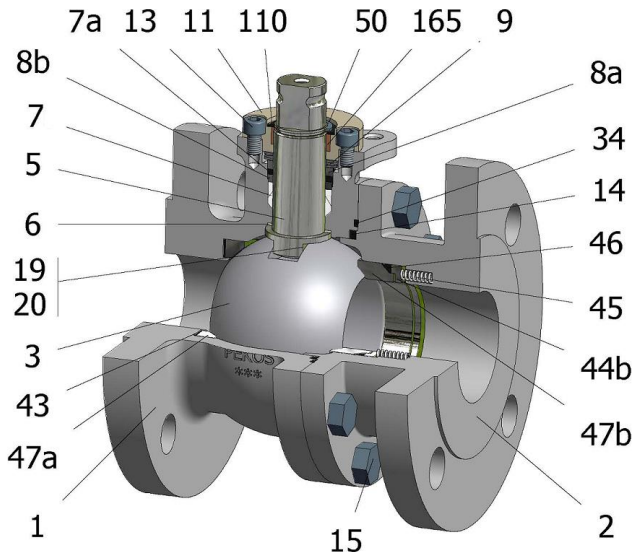


FIG.ZMS 19 CGGG CL150 1/2"-8"



Position	Description	Material
01	Body 1	C.S. A352 LCC
02	Body 2	C.S. A352 LCC
03	Ball	S.S. CF8M+Cr-Carbide
05	Stem	XM-19
06	Stem seal	S.S. AISI 316 Nitrided
07	Stem packing	Graphite
07a	Stem packing 2	Graphite
08a	Gland packing 1	S.S. AISI 316
08b	Gland packing 2	S.S. AISI 316
09	Spring washer	Inconel X718
11	Cover	S.S. AISI 316
13	Cover bolt	S.S. (316)
14	Body seal 1	Graphite
15	Body bolt	A320 L7M
16	Handle	WCB
17	Handle bolt	1.045(8.8)
19	Spring	S.S. AISI 316
20	Antistatic ball	S.S. AISI 316
34	Body seal 2	Graphite
43	Seat seal	Graphite
44b	Ring seat 2	S.S. AISI 316
45	Spring seat	Inconel X750
46	Seat seal	Graphite
47	Metal seat	AISI 316+Cr-Carbide
50	Subjection ring	S.S. AISI 304
110	Subjection ring seal	S.S. AISI 316 Nitrided
165	Stem bearing	Carbongraphite

General features

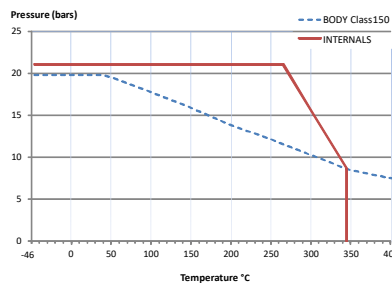
- Floating ball.
- Split body.
- Full bore.
- Metal to Metal.
- Bidirectional.
- Spring loaded seat system.
- Anti Blow out proof stem.
- Autoadjustable packing.
- Anti static device.
- Self-cavity pressure relief.

Standards

- Top flange ISO 5211
- Flanges ANSI B16.5
- Face to face ANSI B16.10
- Testing API 598, API 6D, BS 6755-1
- Design API 6D, B16.34
- Materials according to NACE MR0175

Official approvals

- CERTIFICATE FIRE SAFE TA-LUFT VDI 2440
- ISO 15848-1
- ATEX 2014/34/EU API 6D.
- PED 2014/68/EU SIL 3 CAPABLE



PEKOS GROUP CERTIFICATES:

ISO 9001: 2015 / 2014/68/EU /API-6D



DIMENSIONS & Technical information

DN	CL	D	L	E	A	B	C	F	H	G	V	X	Y	Z	n x d	ISO 5211	Torque	MAST	Weight
1/2"	150	15	108	89	35	60	11	52	-	-	14	11	11	13,5	4 x 16	F05	22	81	2
3/4"	150	20	117	98	43	70	13	54	-	-	14	11	11	13,5	4 x 16	F05	32	81	3
1"	150	25	127	108	51	79	14	60	-	-	18	14	17	19,5	4 x 16	F05	40	175	4
1 1/2"	150	40	165	127	73	98	18	75	271	366	22	17	20	30	4 x 16	F07	80	464	7
2"	150	50	178	152	92	121	19	84	271	374	22	17	20	30	4 x 19	F07	100	464	10
2 1/2"	150	65	190	178	105	140	22	96	271	387	22	17	20	30	4 x 19	F07	180	464	17
3"	150	80	203	191	127	152	24	114	271	435	28	22	22	40	4 x 19	F10	300	969	22
4"	150	100	229	229	157	191	24	128	271	449	28	22	22	40	8 x 19	F10	360	969	32
6"	150	150	394	279	216	241	25	175	271	496	36	27	35	50	8 x 22	F12	1400	1990	81
8"	150	200	457	343	270	298	29	245	271	566	48	36	40	63	8 x 22	F14	1900	4716	143

** Depending on service conditions.

* Dimensions are in mm.

* Torque & MAST are in Nm

* Weight is in Kilograms

* Torque values have been measured ΔP at maximum rating at room temperature