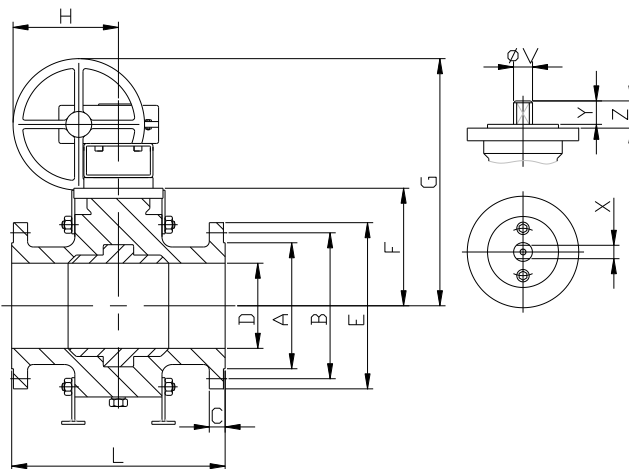
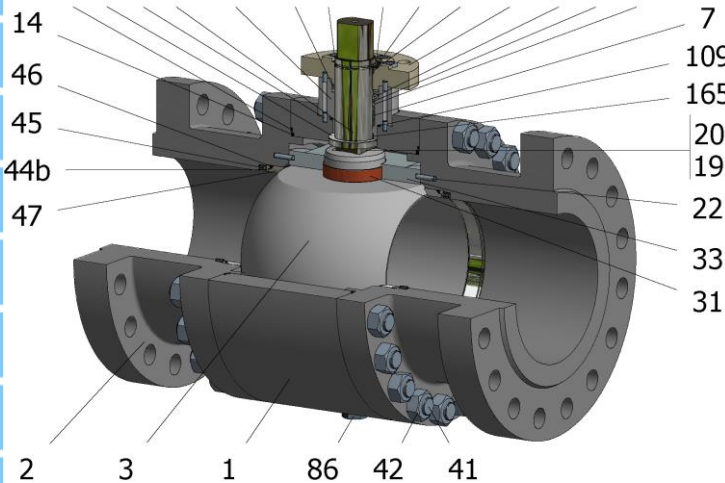


34 6 22 5 151-152 9 153 50 110 165 149 8b 7a 8a



Position	Description	Material
01	Body 1	C.S. 1.0352
02	Body 2	C.S. 1.0352
03	Ball	S.S. 1.4401+Cr-Carbide
05	Stem	XM-19
06	Stem seal	S.S. 1.4401 Nitrided
07	Stem packing 1	Graphite
07a	Stem packing 2	Graphite
08a	Gland packing 1	S.S. 1.4401
08b	Gland packing 2	S.S. 1.4401
09	Spring washer	Inconel X718
14	Body seal 1	Graphite
19	Spring	S.S. 1.4401
20	Antistatic ball	S.S. 1.4401
22	Stop pin	S.S. 1.4401
31	Bearing	Carbongraphite
33	Support bearing	S275JR+ENP
34	Body seal 2	Graphite
41	Stud	A2-70
42	Nut	A2-70
44b	Ring seat 1	S.S. 1.4401
45	Spring	Inconel X750
46	Seat seal	Graphite
47	Metal seat	1.4401+Cr-Carbide
50	Subjection ring	S.S. 1.4301
86	Drain plug	C.S. A350 LF2
86a	Vent plug	C.S. A350 LF2
109	Cover seal	Graphite
110	Subjection ring seal	S.S. 1.4401 Nitrided
149	ISO cover	C.S. 1.0352
151	Body cover 1	C.S. 1.0352
152	ISO cover bolt	A4-70
153	ISO cover bolt	A4-70
165	Stem bearing	Carbongraphite

General features

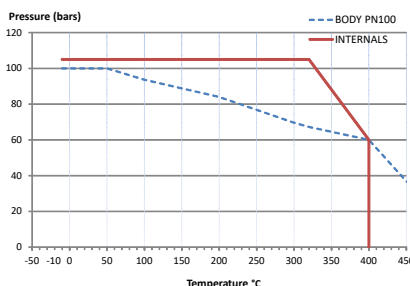
- Full trunnion.
- Three pieces.
- Full bore.
- Metal to Metal.
- Bidirectional.
- Spring loaded seat system.
- Anti Blow out proof stem.
- Autoadjustable packing.
- Anti static device.
- Self-cavity pressure relief.
- Double Block and Bleed.

Standards

- Top flange ISO 5211
- Flanges EN 1092-01
- Face to face EN 558
- Testing EN-12266, ISO 5208
- Design EN-12516, ISO 17292

Official approvals

- CERTIFICATE FIRE SAFE
- TA-LUFT VDI 2440
- ISO 15848-1
- ATEX 2014/34/EU
- PED 2014/68/EU
- SIL 3 CAPABLE



PEKOS GROUP CERTIFICATES:
ISO 9001: 2015 / 2014/68/EU / API-6D



DIMENSIONS & Technical information

DN	PN	D	L	E	A	B	C	F	H	G	V	X	Y	Z	n x d	ISO 5211	Torque	MAST	Weight
100	100	100	430	265	162	210	36	155	**	**	36	27	35	44	8 x 30	F14-1	1280	1990	103
125	100	125	500	315	188	250	40	191	**	**	36	27	35	44	8 x 33	F14-1	2065	1990	158
150	100	150	480	355	218	290	44	229	**	**	48	36	40	63	12 x 33	F16-1	2850	4716	212
200	100	200	600	430	285	360	52	295	**	**	60	46	60	73	12 x 36	F16	4445	9360	378
250	100	250	730	505	345	430	60	330	**	**	60	46	60	68	12 x 39	F25-1	5690	9360	632
300	100	300	850	585	410	500	68	400	**	**	72	55	70	83	16 x 42	F25	6800	16131	678
350	100	350	980	655	465	560	74	460	**	**	72	55	70	83	16 x 48	F30-1	11560	16131	1134

** Depending on service conditions. * Dimensions are in mm. * Torque & MAST are in Nm. * Weight is in Kilograms

* Torque values have been measured ΔP at maximum rating at room temperature